

Artists Alan Stones and Rebecca Payn invite you to visit their studio at Blencarn (10 miles east of Penrith), Cumbria.

They have exhibited widely. Major commissions and collections include Falkland Islands Government, The National Science Museum, Gulbenkian Foundation, The University of Wales, Sheffield City Art Galleries, The National Museum of Wales, Imperial College of Science and Technology.

'Since moving to Cumbria in 1982 the landscape has impressed itself upon me more and more. Cross Fell, the highest point on the Pennines, towers over the village and the rising and setting sun glances along the length of the fellside emphasising undulations, tracks and scars left by weather, sheep and man.

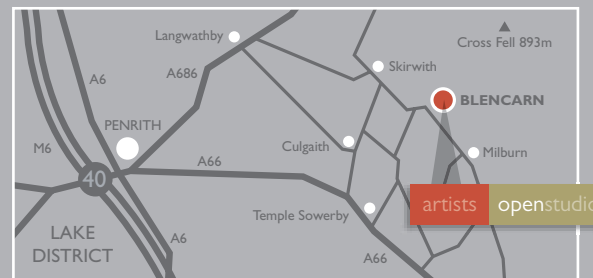
On overcast days the presence of the fell diminishes and rooks and hawthorns appearing through the mist take on a greater significance. The many thousands of thorn trees on the lower parts of the fell are truly wonderful in their great variety of shapes and sizes – some gnarled and bent by the elements and others with seemingly charmed lives.

I'm told that this area has one of the largest populations of rooks in the country and I can well believe it. When the sun is going down I tend to walk out of the studio towards the fell to watch these birds wheeling about in the air in massive flocks before settling to roost. In the fading light they are just about all that is visible, along with the hawthorns silhouetted against the skyline.'

Alan Stones

findus

From Penrith follow the A686 towards Alston. Just beyond Langwathby turn right to Skirwith. In the centre of Skirwith turn right and after ¼ mile fork left to Blencarn. The studio is easily found just off the village green in the centre of Blencarn. Plenty of parking.



Visitors will be given a warm welcome. We are open at the following times throughout the year:

Thursday afternoons, 2.00 pm to 5.00 pm

Saturday afternoons, 2.00 pm to 5.00 pm

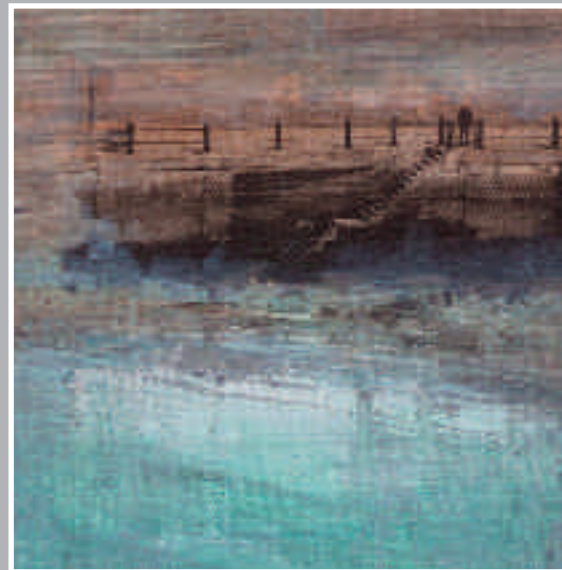
Other times by appointment.

Very occasionally we may be closed so, to avoid disappointment, we suggest you give us a call before your visit, just to make sure we are here!

Artists' Open Studio: Glen Cottage, Blencarn, Penrith, Cumbria, CA10 1TX. Tel: 01768 88688



Painting studios • oil paintings and drawings
printmaking studio • stone and plate lithography.



A garden setting within one of the Eden Valley's great little villages.
Walks along quiet lanes from the village. The foot of Cross Fell is a mile or so away with spectacular views back across the valley.



An opportunity to see work in progress,
to view work on display, to browse,
and also to buy directly from the studio.